

# PSM BROKERAGE MARKETING HUB

---

*Exclusive Marketing  
Services For Our Agent  
and Agency Partners*

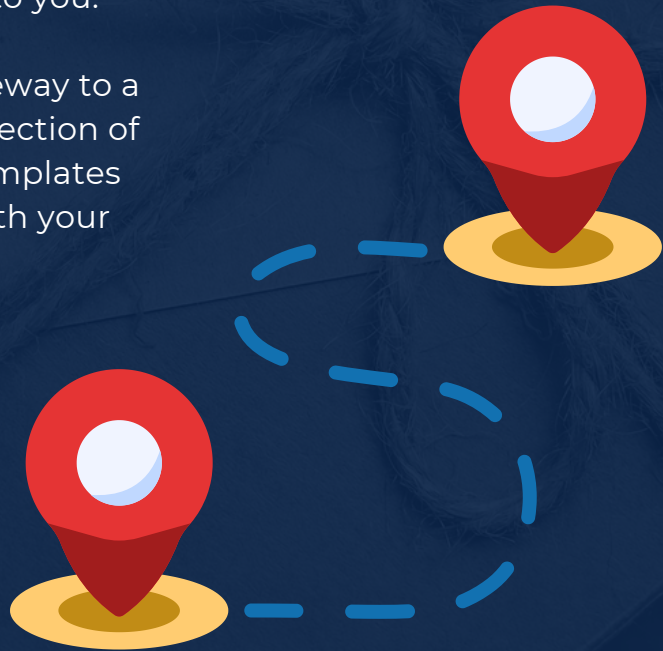
**(800) 998-7715**  
WWW.PSMBROKERAGE.COM

**B04052401**

# LET'S PUT YOU ON THE MAP

At PSM Brokerage, we're dedicated to empowering our agents with the tools they need to stand out and succeed. This service is available to our agents, no expense to you.

The PSM Marketing Hub is your gateway to a carefully crafted and \*compliant collection of premium, easy-to-use marketing templates designed by our marketing team with your needs in mind.



**(800) 998-7715**

[WWW.PSMBROKERAGE.COM](http://WWW.PSMBROKERAGE.COM)

# EMPOWER YOUR MARKETING

Discover marketing that's not just accessible but intuitive. With the PSM Marketing Hub, you're equipped with everything you need to capture attention, foster relationships, and grow your business. Exclusively for PSM Brokerage agents, these resources are crafted to help you shine.

**Why Wait?** Enhance your marketing today with the PSM Marketing Hub. It's not just about making it easier; it's about making it better. Because when you succeed, we all do.



**(800) 998-7715**

[WWW.PSMBROKERAGE.COM](http://WWW.PSMBROKERAGE.COM)

# TARGETED APPROACH



**Brand  
Development**

---



**Traditional  
Advertising**

---



**Digital  
Advertising**

---



**Custom  
Solutions**

---

**(800) 998-7715**

[WWW.PSMBROKERAGE.COM](http://WWW.PSMBROKERAGE.COM)



**Note:**

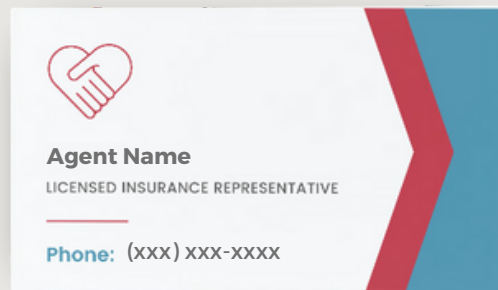
All our campaigns are custom and adhere to the highest compliance standards.

# BRAND DEVELOPMENT

## Trust and Credibility

A strong brand builds trust and credibility with your audience. When your business presents itself in a professional and consistent manner, it sends a message that you are an industry leader and an expert in your field. This perception makes customers more likely to trust your products and services.

**Our Value-Added Services include custom logo design, Letterhead design and business card design**



**(800) 998-7715**

WWW.PSMBROKERAGE.COM



**Stand out with professional and polished branding package**

# LOGO SAMPLES



# CORPORATE ID SAMPLE



# TRADITIONAL ADVERTISING

## Tri-Fold Brochures

A tri-fold brochure neatly organizes information into distinct sections, allowing for a clear, concise presentation of insurance services, benefits, and options.

Compared to other advertising methods, tri-fold brochures are a cost-effective way to reach potential clients, offering high impact at a low cost.

A well-designed tri-fold brochure can project a professional image, helping to build trust and credibility in your insurance services.



**(800) 998-7715**

WWW.PSMBROKERAGE.COM



# TRADITIONAL ADVERTISING

**TURNING 65?**

We already know Medicare can be confusing...

We can help answer all your questions!

Call Today!  
**XXX-XXX-XXXX**

FREE QUOTE

**NOW IS THE TIME TO COMPARE / CHANGE PLANS!**

Medicare Annual Enrollment Period runs from  
**Oct. 15th – Dec. 7th**

Call to speak to a Licensed Sales Agent.  
**XXX-XXX-XXXX**

NO COST QUOTE

## Postcards

Direct mail allows for precise targeting, from demographic specifics to geographic areas, ensuring your message reaches the most relevant audience.

A physical mail piece creates a tangible connection with potential clients, offering something they can hold, read, and refer back to at their convenience.



**(800) 998-7715**

WWW.PSMBROKERAGE.COM

# TRADITIONAL ADVERTISING

## Printed Flyers

Printed flyers can be distributed widely in community centers, local businesses, events, and more, ensuring a broad reach to potential clients.

Flyers are an economical choice for advertising, offering an affordable way to communicate your insurance services to a large audience.

Flyers are excellent for targeting specific localities, allowing you to tailor your message to the needs and interests of a local audience.



**(800) 998-7715**

WWW.PSMBROKERAGE.COM

# TRADITIONAL ADVERTISING



**(800) 998-7715**

WWW.PSMBROKERAGE.COM



[Download Sample Versions](#)

# DIGITAL ADVERTISING

## Email Campaigns

Email campaigns offer a high ROI due to their low cost of execution, eliminating the need for physical materials and postage.

You can reach a large number of potential clients simultaneously, anywhere in the world, as long as they have an email address.

Email allows for regular contact with your audience, keeping your brand top of mind without being intrusive, especially when content is valuable and well-targeted.



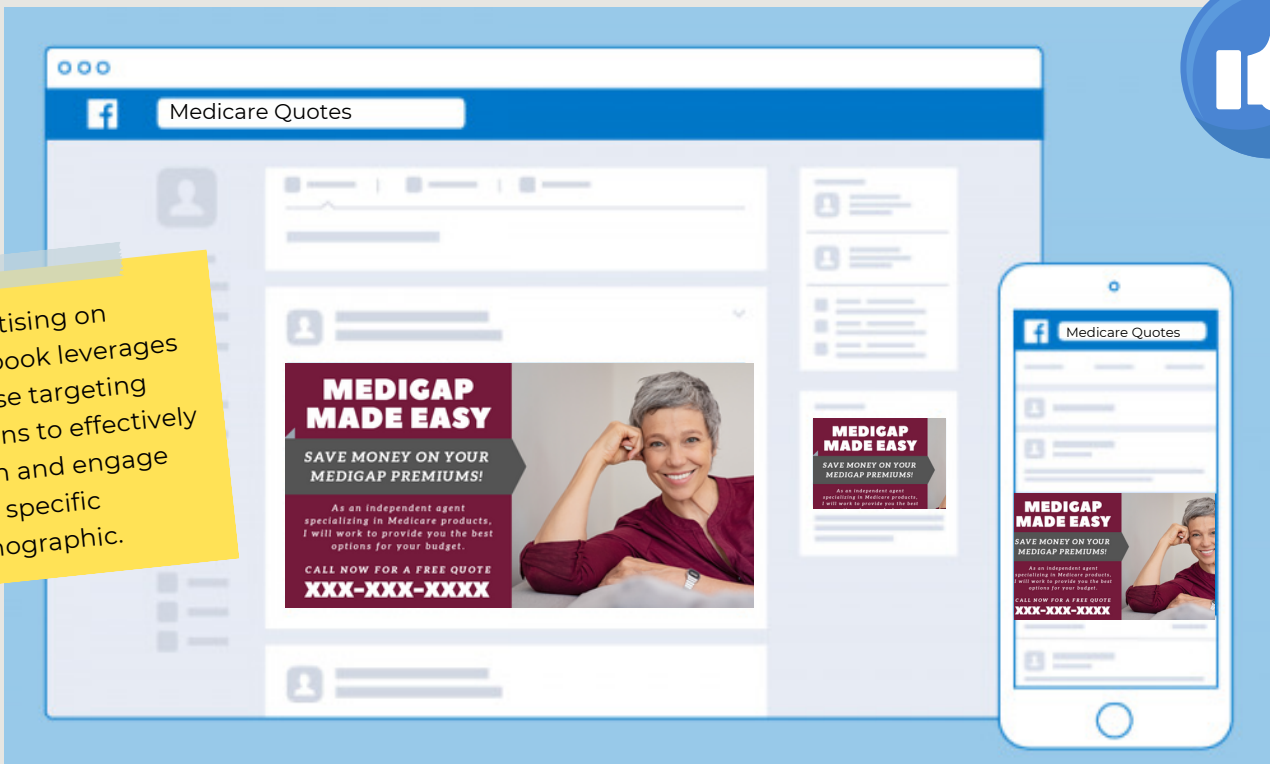
**(800) 998-7715**

WWW.PSMBROKERAGE.COM

# DIGITAL ADVERTISING

## Facebook Campaigns

Advertising on Facebook leverages precise targeting options to effectively reach and engage your specific demographic.



**(800) 998-7715**

[WWW.PSMBROKERAGE.COM](http://WWW.PSMBROKERAGE.COM)

# PRESENTATION MATERIALS

Our compliance approved **Medicare 101 Presentation** can be branded with your contact info, color scheme and logo.



# CUSTOM SOLUTIONS



**(800) 998-7715**

[WWW.PSMBROKERAGE.COM](http://WWW.PSMBROKERAGE.COM)

# CUSTOM SOLUTIONS

**WHEN IT COMES TO MEDICARE,  
YOU HAVE CHOICES!**

Let me help you find the right plan that fits  
your specific needs and budget.

Part A

HOSPITAL  
STAYS

Part B

DOCTOR  
VISITS

Part C

MEDICARE  
ADVANTAGE

Part D

RX  
DRUGS



**Agent Name | Call today: (xxx) xxx-xxxx**

**(800) 998-7715**

WWW.PSMBROKERAGE.COM



# WE WANT YOU ENGAGED



## Be part of the action

---

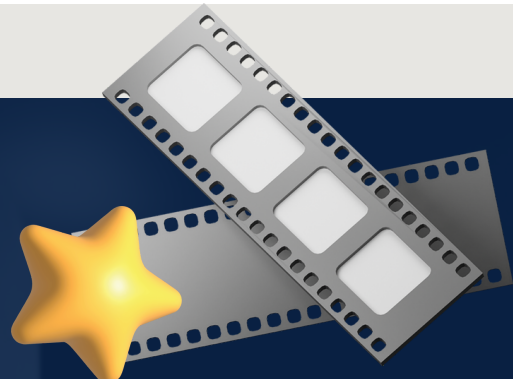
As a partner, we would love your participation in being involved in your design. We would encourage you to provide a headshot, your favorite colors schemes, imagery, etc.

***Our goal is to give you a platform to convey the uniqueness of your brand and highlight all you have to offer.***

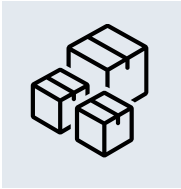
We consider this a partnership and would be happy to brainstorm on any creative ideas you have or the specific approach you would like to take.

**(800) 998-7715**

[WWW.PSMBROKERAGE.COM](http://WWW.PSMBROKERAGE.COM)



# OVERVIEW



## In-House Services We Offer Complimentary to our Agent Partners

### Services Include:

- Logo Creation Including Letterhead and Business Card Design
- Print Media - Flyers, Brochures, Posters, etc.
- Email Campaign Design
- Facebook Campaign Design
- Social Media Campaign Design
- Custom Pieces



**(800) 998-7715**

[WWW.PSMBROKERAGE.COM](http://WWW.PSMBROKERAGE.COM)



**Note:**

All our campaigns are custom and adhere to the highest compliance standards.

# COMPLIANCE



At PSM Brokerage, we place a strong emphasis on the integrity and compliance of our custom marketing designs. Each piece is meticulously vetted through a comprehensive compliance process, guaranteeing that it meets the highest industry standards.

This diligent approach ensures that our agents can utilize our services with the utmost confidence, fully aware that they are not only receiving innovative and effective marketing solutions but also ones that are fully compliant with regulatory requirements.

It's our commitment to providing services that agents can trust, allowing them to focus on their core activities with peace of mind.

## INTERESTED?

Contact us today and we will set up a preliminary meeting to explore your goals and expectations.

We look forward to building something great!

**(800) 998-7715**

[WWW.PSMBROKERAGE.COM](http://WWW.PSMBROKERAGE.COM)



## SCAN THE QR CODE TO GET STARTED

[www.psmbrokerage.com/psm-marketing-hub](http://www.psmbrokerage.com/psm-marketing-hub)

